

CAPI2 BV NETHERLANDS

CAPI2 Node replacement

*Distributed power
systems*

Get into the bus.....



**CAPI2 BV
NETHERLANDS**

Spiegel 29
5674CE Nuenen
Netherlands

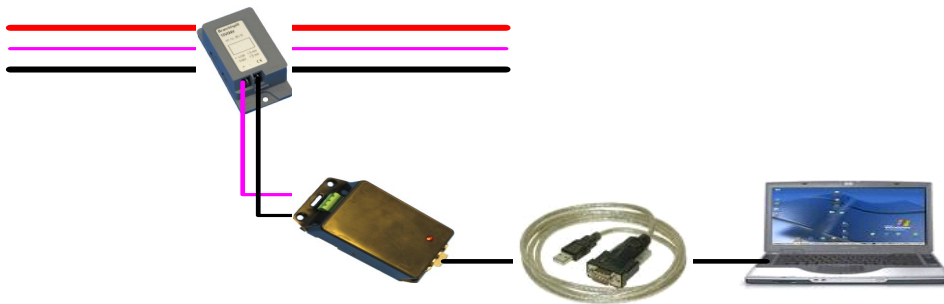
Tel: 0031 40 2847001
Fax: 0031 40 2834101
E-mail: info@capi2.com

- **Capi2 replacement of a defect node**

Incase a node might be replaced on a existing system it is very simple to replace it for a new node. Within this document we will describe how it is done. This will only take **5** steps within only **5** minutes. The Capi2 system is then again fully operational.

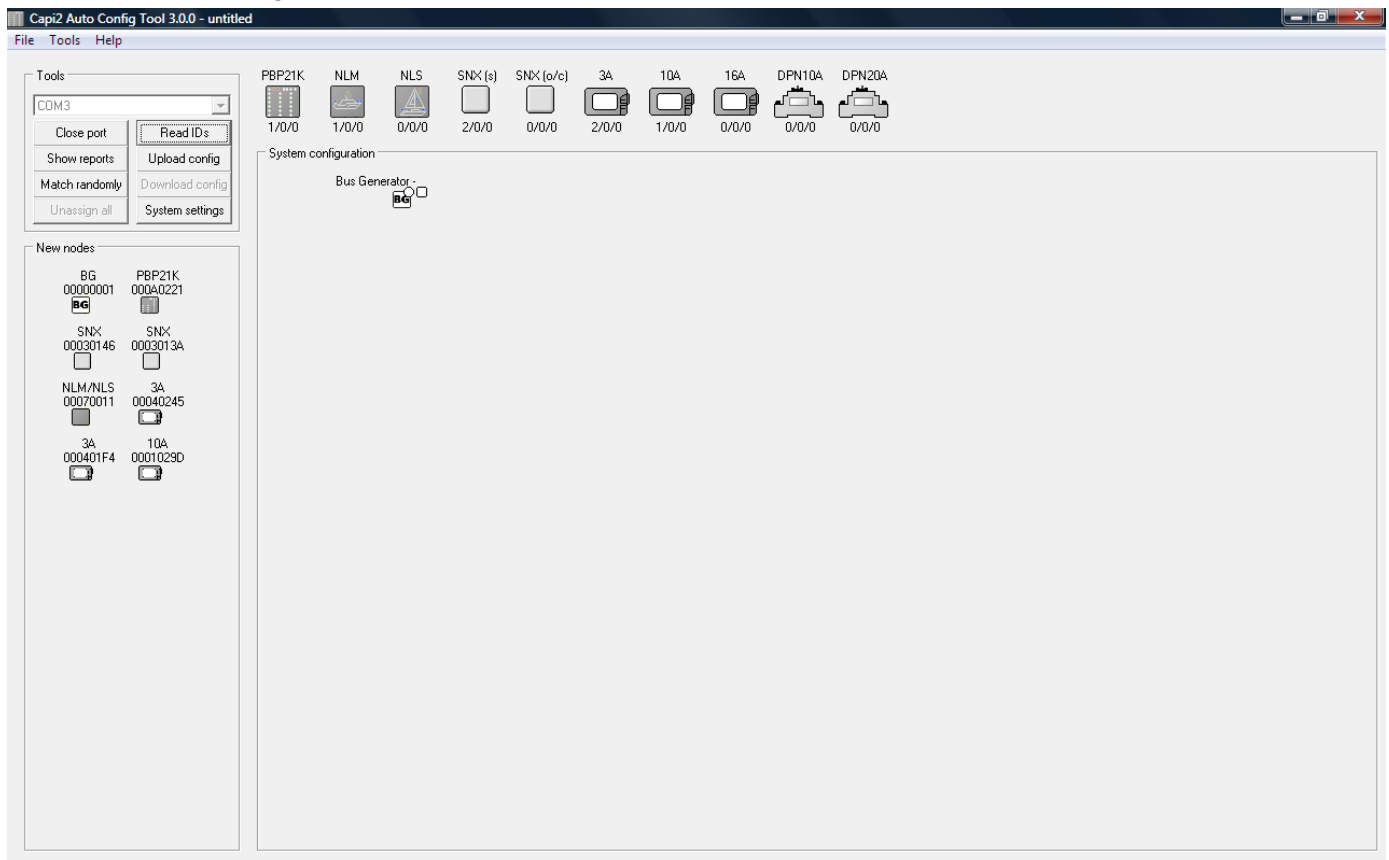
Preparation for programming

- Connect the computer to the Capi2 system.



Step 1

Start de Auto Configuration Tool and select **Read id's**.



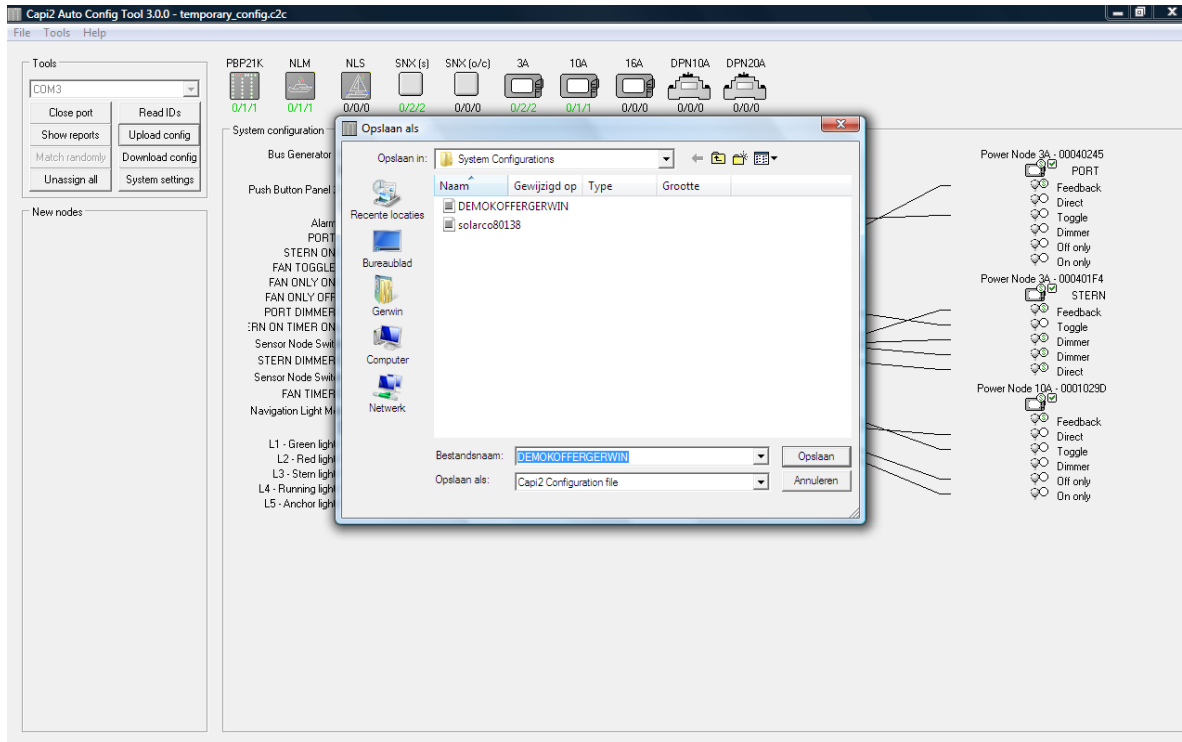
Step 2

Start de Auto Configuration Tool and select **Upload config**

Now just **safe** the uploaded file

Configuration of the system is ready to alter

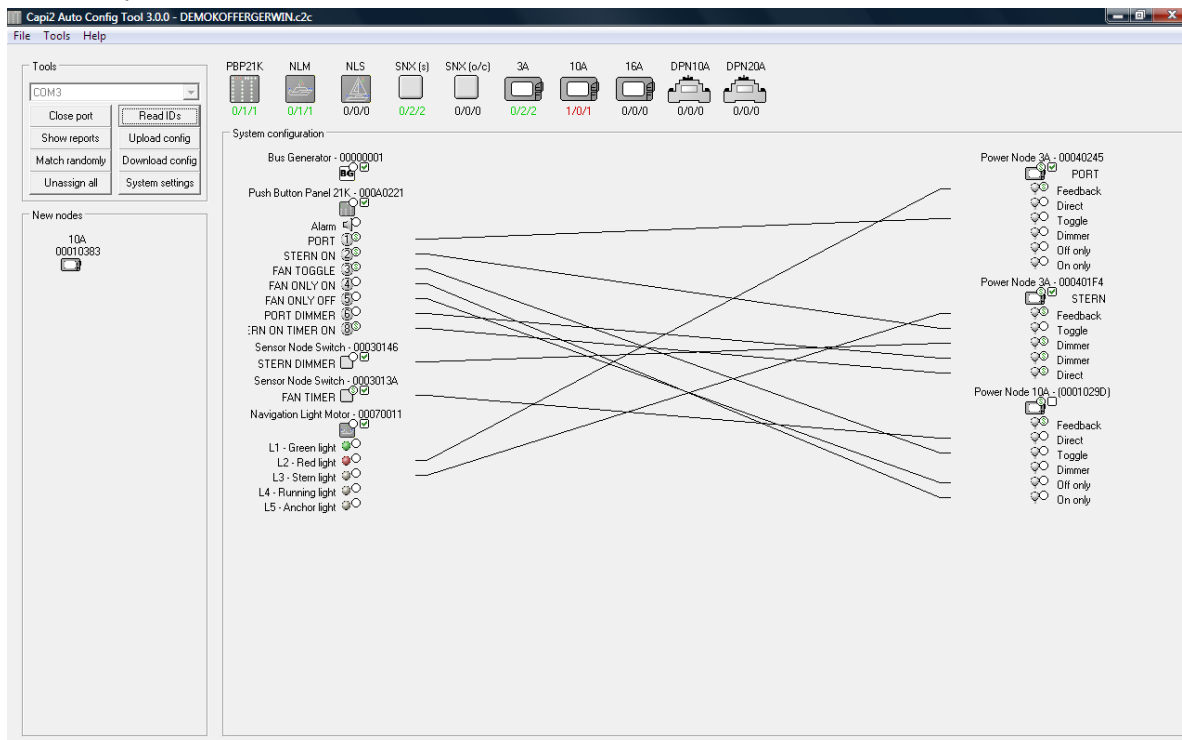
If running with ACT2.2.7 then open the configuration file from the saved folder.



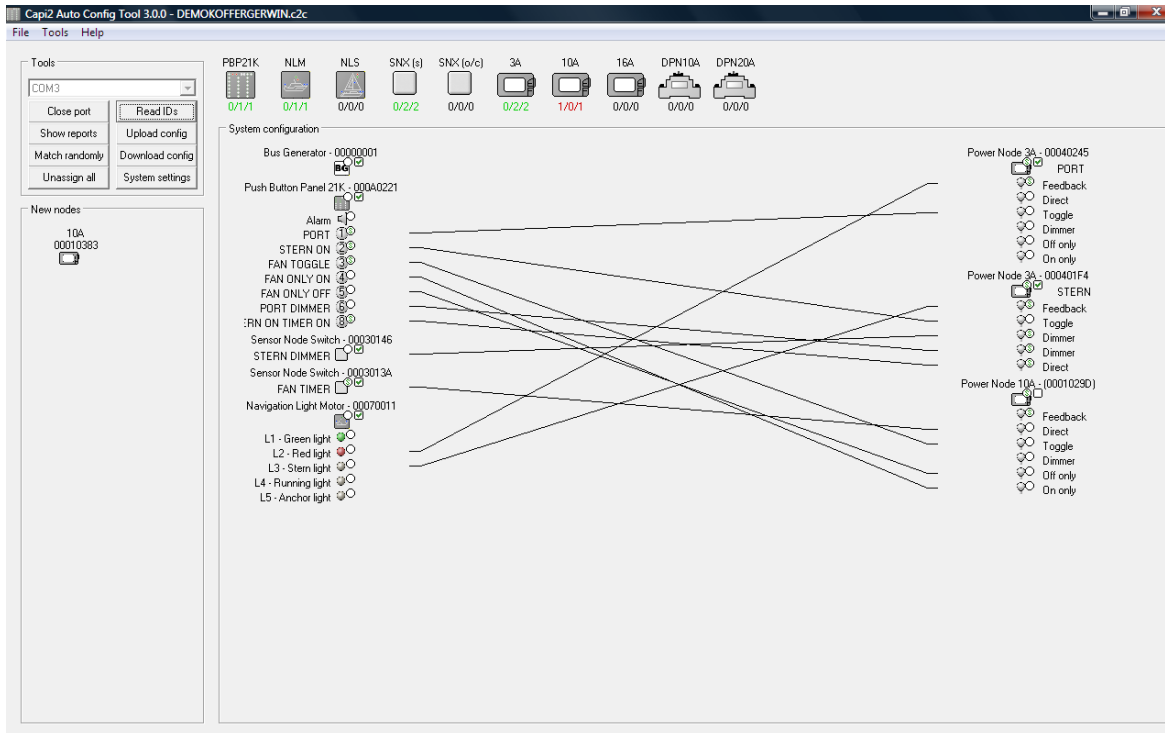
Step 3

Replace the faulty node in the hardware and select **Read ID's**

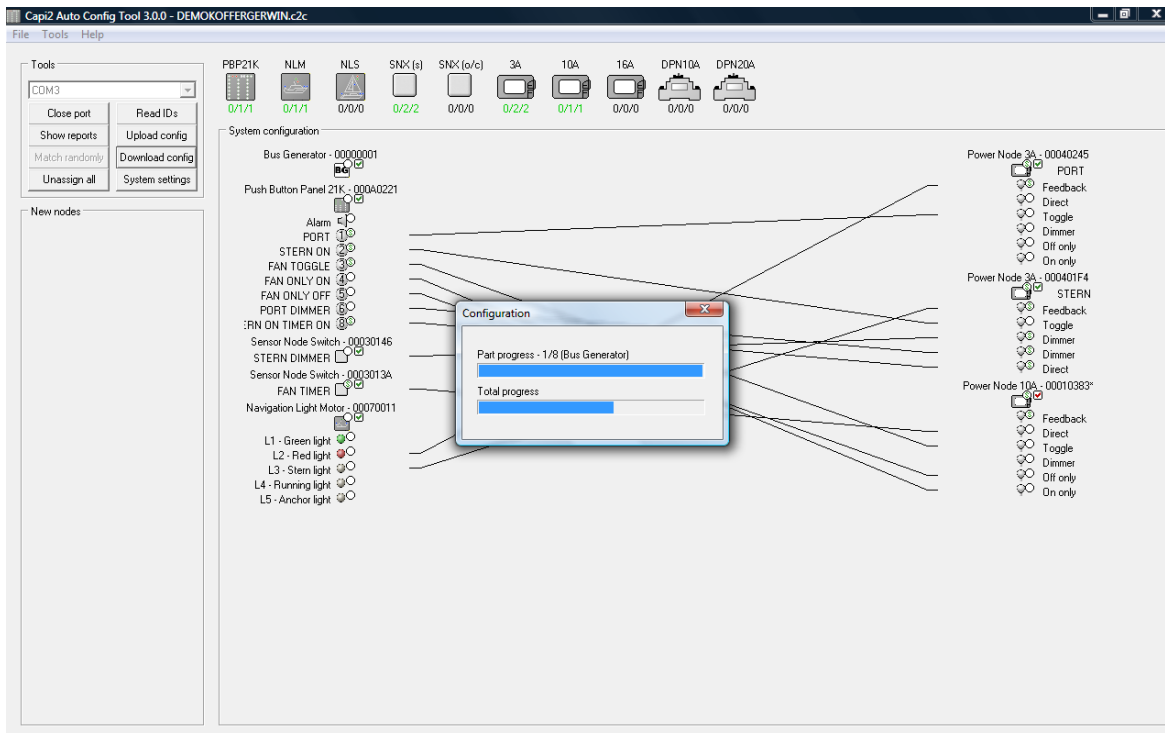
The replaced node is now shown under new nodes



Step 4 Select Match randomly



Step 5 Now select Download config



The file is being downloaded

The screenshot shows the Capi2 Auto Config Tool 3.0.0 interface. At the top, a status bar reads "The file is being downloaded". Below this, the application window title is "Capi2 Auto Config Tool 3.0.0 - DEMOKOFFERGERWIN.c2c". The interface includes a menu bar (File, Tools, Help), a toolbar with various device icons (PBP21K, NLM, NLS, SNX (s), SNX (o/c), 3A, 10A, 16A, DPN10A, DPN20A) and their respective counts, and a main workspace for system configuration.

The system configuration workspace displays a network diagram with nodes and connections. A central dialog box titled "Please wait..." is overlaid on the diagram, containing the text "Downloading config..." and a progress bar that is approximately 50% full. The nodes visible in the configuration include:

- Bus Generator - 00000001
- Push Button Panel 21K - 000A0221
- Alarm
- PORT
- STERN ON
- FAN TOGGLE
- FAN ONLY ON
- FAN ONLY OFF
- PORT DIMMER
- :RN ON TIMER ON
- Sensor Node Switch - 00030146
- STERN DIMMER
- Sensor Node Switch - 0003013A
- FAN TIMER
- Navigation Light Motor - 00070011
- L1 - Green light
- L2 - Red light
- L3 - Stern light
- L4 - Running light
- L5 - Anchor light
- Power Node 3A - 00040245
- PORT
- Feedback
- Direct
- Toggle
- Dimmer
- Off only
- On only
- Power Node 3A - 000401F4
- STERN
- Feedback
- Toggle
- Dimmer
- Dimmer
- Direct
- Power Node 10A - 00010383*
- Feedback
- Direct
- Toggle
- Dimmer
- Off only
- On only

On the left side, there is a "Tools" panel with a dropdown menu set to "COM3" and buttons for "Close port", "Read IDs", "Show reports", "Upload config", "Match randomly", "Download config", "Unassign all", and "System settings". Below the tools is a "New nodes" section which is currently empty.

Configuration is succeeded and operational again as before!