

CAPI2 BV NETHERLANDS

ACT 3.0.x Node sw upgrade

*Distributed power
systems*

Get into the bus.....



**CAPI2 BV
NETHERLANDS**

Spiegel 29
5674CE Nuenen
Netherlands

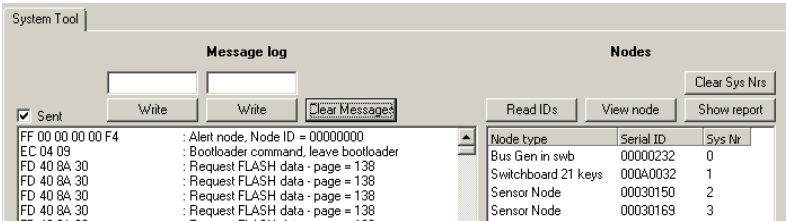
Tel: 0031 40 2847001
Fax: 0031 40 2834101
E-mail: info@capi2.com

- Upgrading the firmware in the nodes

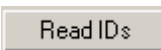
As from v75 it is possible to upgrade the firmware.

Nodes that has a version number lower then v75 can not be updated. It is also not advisable to update the nodes without permission from Capi2.

Please follow the instruction below to upgrade the firmware in the nodes.



- Open the Capi2 Test System Tool
Then make sure that you have selected the tab System Tool

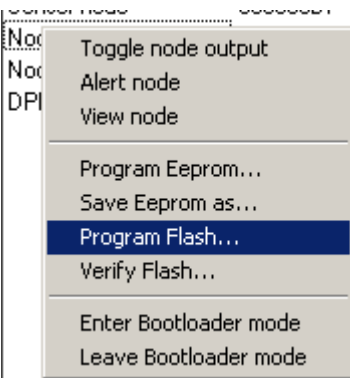


- Select **Read ID's**

The system is now reading all the id's of the nodes that are in the system.

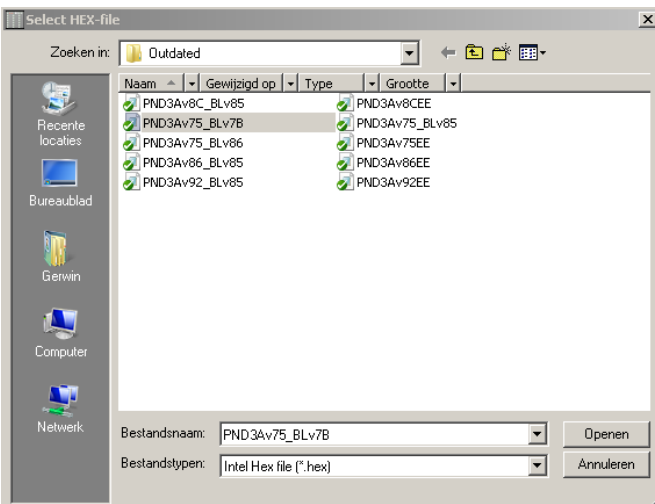
| Node type | Serial ID | Sys Nr |
|------------------------|-----------|--------|
| Bus Gen in swb | 00000001 | 0 |
| Switchboard 21 keys | 000A001C | 1 |
| Navigation Light Panel | 0007002A | 2 |
| Sensor node | 000300B4 | 3 |
| Sensor node | 000300B7 | 4 |
| Node 3 A | 00040258 | 4 |
| Node 3 A | 0004021C | 6 |

- Now bring the pointer to the **node** that must be upgraded and click right mouse button.



- Then the following popup will appear

- Bring the pointer to **Program Flash** and click left mouse button



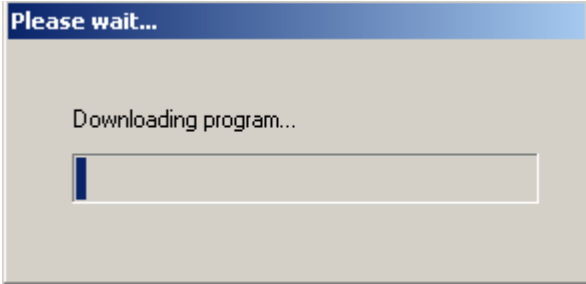
- Then the popup **Select HEX file** will appear

- Find the folder where the program is located

- Bring the pointer to **Program (PND3Av75_Blv7D)**

- Select the file with the pointer

- Now select open



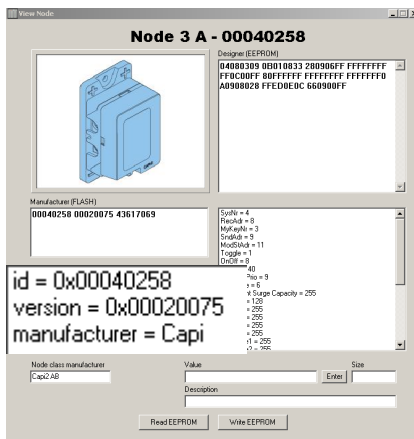
- The firmware will be updated now

Read ID's - When it is finished select **Read ID's**

The system is now reading all the id's of the nodes that are in the system.

| Node type | Serial ID | Sys Nr |
|------------------------|-----------|--------|
| Bus Gen in swb | 00000001 | 0 |
| Switchboard 21 keys | 000A001C | 1 |
| Navigation Light Panel | 0007002A | 2 |
| Sensor node | 000300B4 | 3 |
| Sensor node | 000300B7 | 4 |
| Node 3 A | 00040258 | 4 |
| Node 3 A | 0004021C | 6 |

- Now bring the pointer to the **node** that has been upgraded and double click left mouse button.



- The View Node popup is appearing and you can check if the correct firmware has been updated.
VERSION = 0x000xxxxxx (must be the same as file nr)

- Now repeat this for every node that must be upgraded.