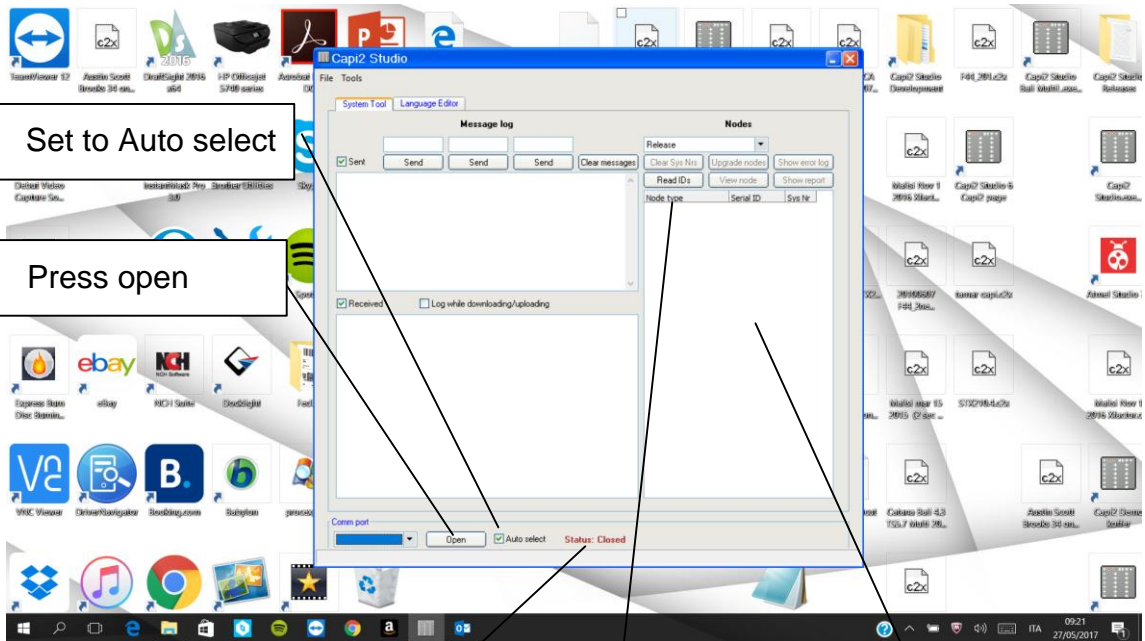


Set up communication with Capi2.



Connect the Serial USB interface to the Bus generator BG232/MT232 (can be a black or a white box) and the computer.



1 Set to Auto select

2 Press open

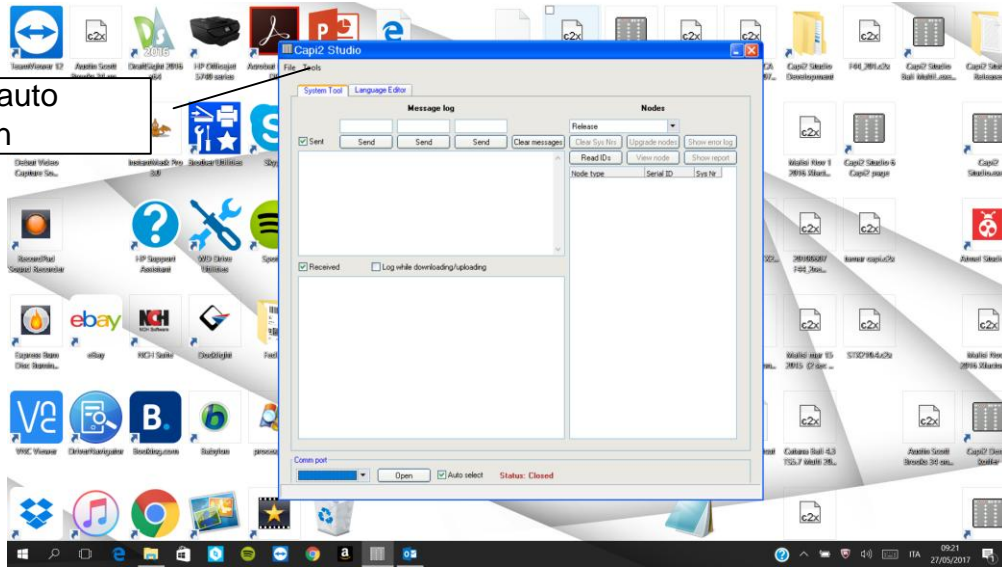
3 Status should change from Closed to Open and color from red to green. If it does not Open, unplug the USB cable and pugg it in again.

4 When you have Open Press "read IDs"

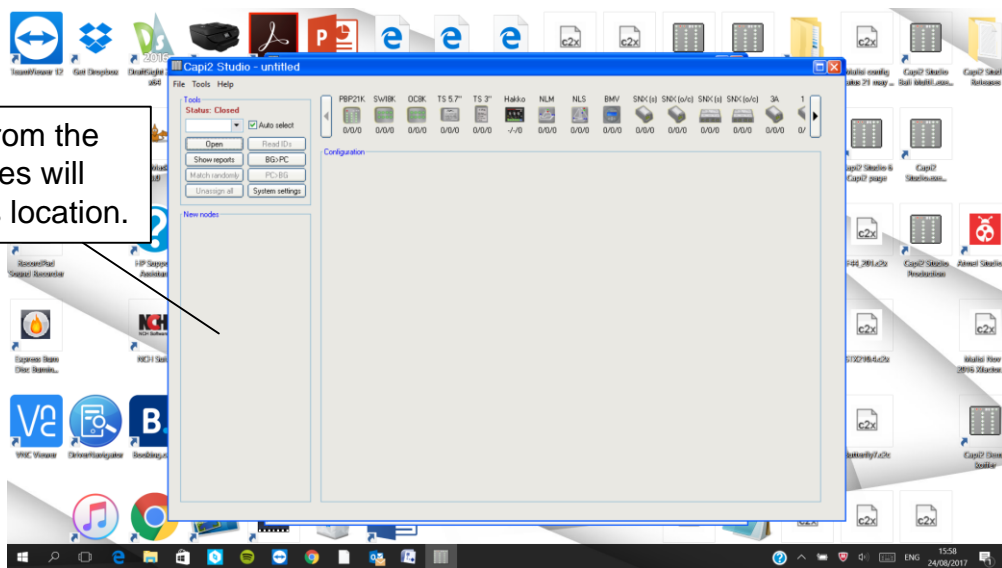
5 The serial IDs of the different unites will appere here.

Upload the configuration in the system

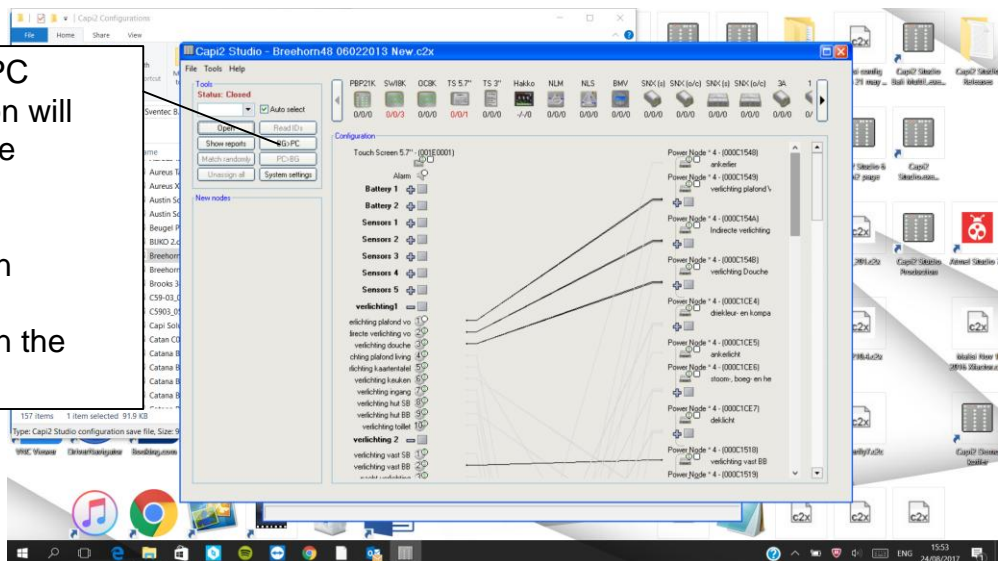
Press tools/auto configuration



The id nbr from the existing units will move to this location.



Press BG>PC Configuration will appear in the window. Store the configuration This is the configuration the system has.



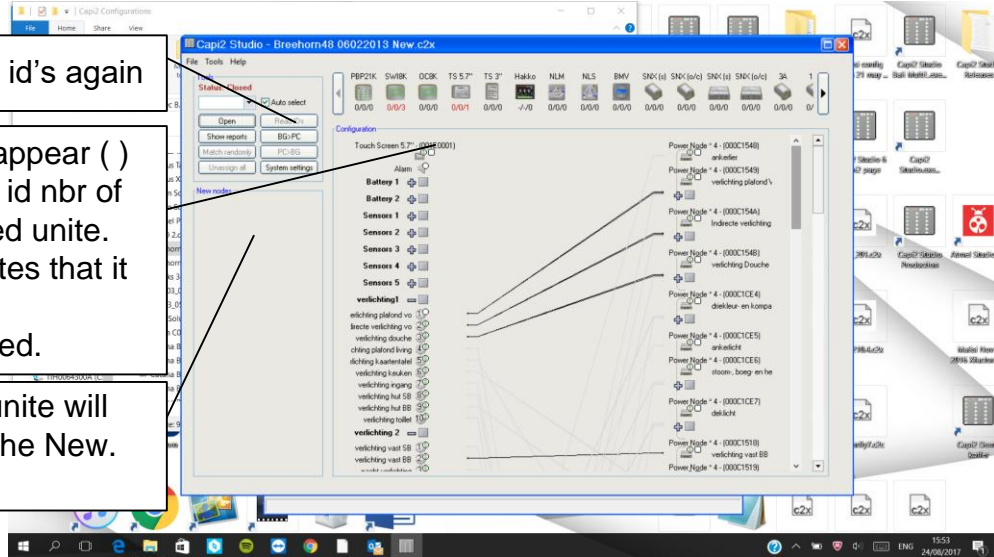
Replace and configure one new unite(in this example the Touch screen 5.7).

Change the Touch screen 5.7).

Press read id's again

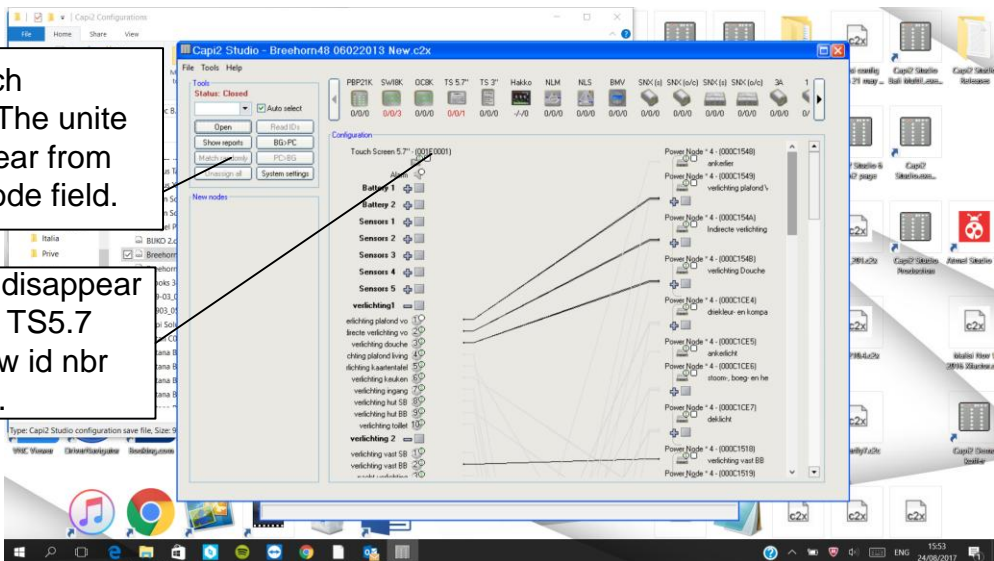
There will appear () around the id nbr of the removed unite. This indicates that it has been disconnected.

The new unite will appear in the New. Node field.



Press Match randomly. The unite will disappear from the New node field.

The () will disappear around the TS5.7 and the new id nbr will appear.



Press PC>BG and the new configuration with new unite will be downloaded and configured into the system

