

# Remote Temperature Monitor with Track and Trace option.

Keep an eye on your valuable goods wherever it is.



The Capi2 “**Remote Temperature Monitor**” is designed to monitor temperatures for animal and food transportation, located at a remote location.



The system uses “up to date” communication technology such as GSM, GPRS and Internet to optimize control of your valuable goods.

The big advantage is that you as manager through a computer/tablet or smart phone can control the temperature and with the GPS module the location of the vehicle, where ever the goods is.

In addition are all data stored on a server for eventual future evaluation/control.



## Easy to use

### Vehicle unite:

Equipped with a numerical display which shows status of temperature or door switches. Audible and visual alarm when status is out of range.

### Web page:

Can be activated from any computer tablet or smart phone. No special software is needed.

### Location:

Position is shown on Google maps.

### Alarms:

Are send directly as SMS and e-mail

## Available data

### Logged data:

The system can be set to receive and store data every one minute to every sixty minutes.

These data such as temperature, status of door switches, battery status, positioning, start/stop and pause are stored on the server. Stored information can be visible and printed out at any time.

## Vehicle and security

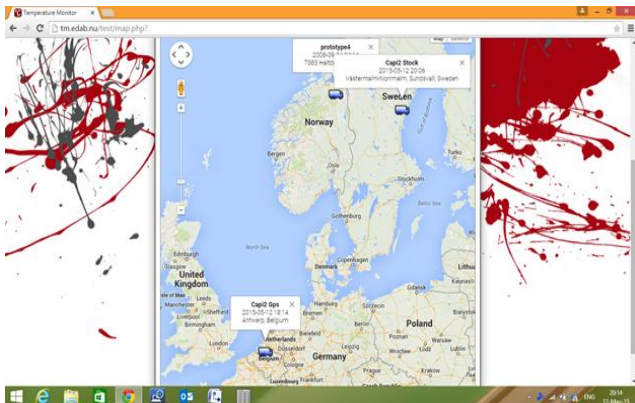
### Vehicle:

The vehicle is registrated in the system with an identification created by the costumer. This way is it easy to see where a specific vehicle is located.

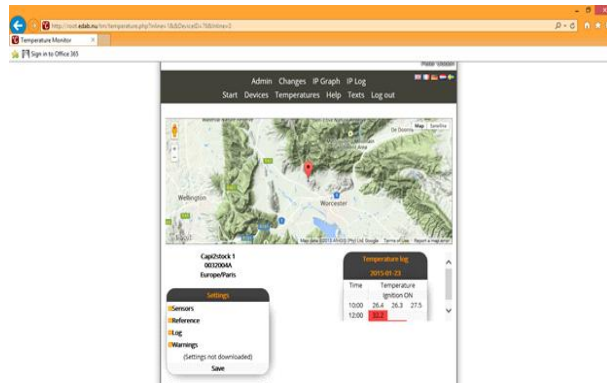
### Security:

Each vehicle has its own login code. With personal user IDs can stored information be fully visible or have limited visibility.

Google map with location of multiple vehicles



Google map with stored data for a specific vehicle.

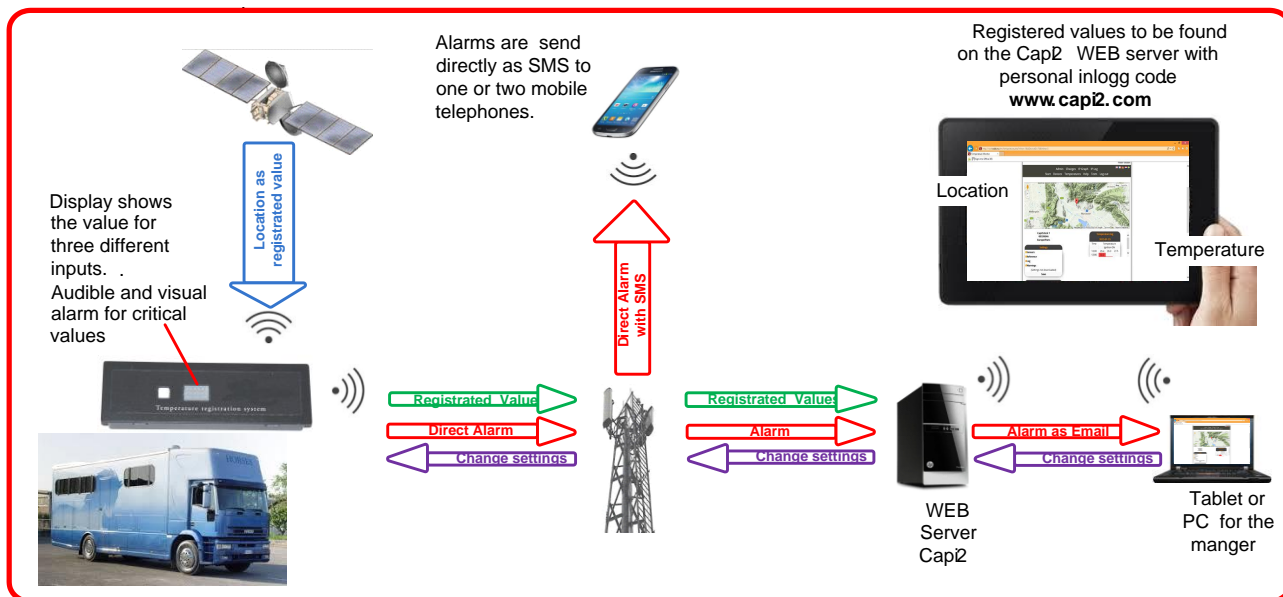


- On/off switch.
- Display with three temperatures.



- The unite can be placed in a standard DIN radio mounting.

**How does it work ?**



**Technical specification**

Length 1	180 mm
Length 2	189 mm
Width 1	52 mm
Width 2	60 mm
Height	27 mm
Temp sensor inputs	x 3
Temp.sensor type	NTC,4.7k, B25/3977
Voltage	12V/24V
Consumption W	1 / 1
Current mA	83 /44
Main Connector	Hartmann 10p
GSM connector type	SMA
GPRS connector type	SMA
GSM card type	Standard
Data trans, per log	24 byte

